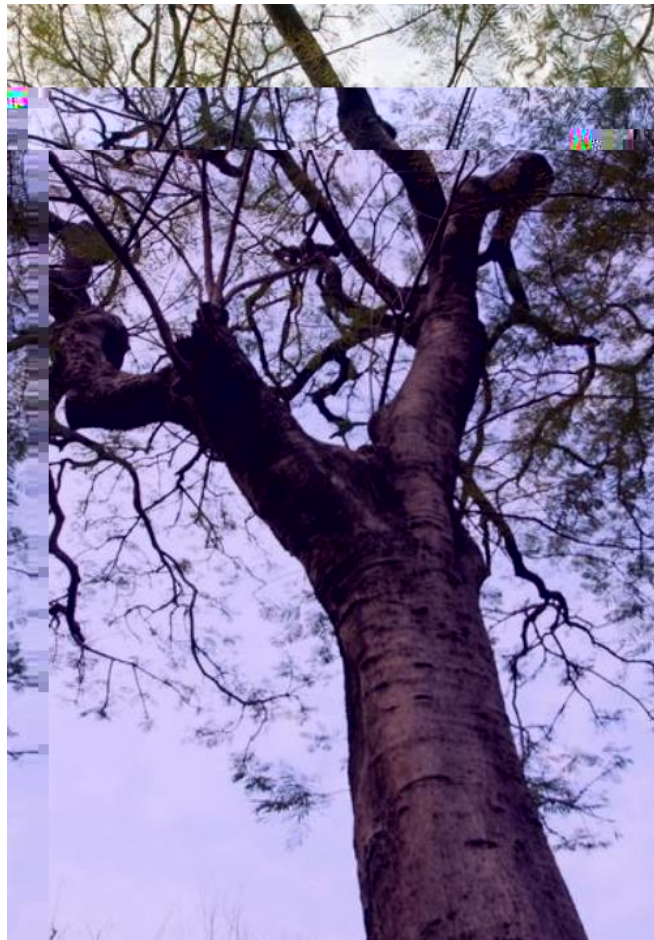


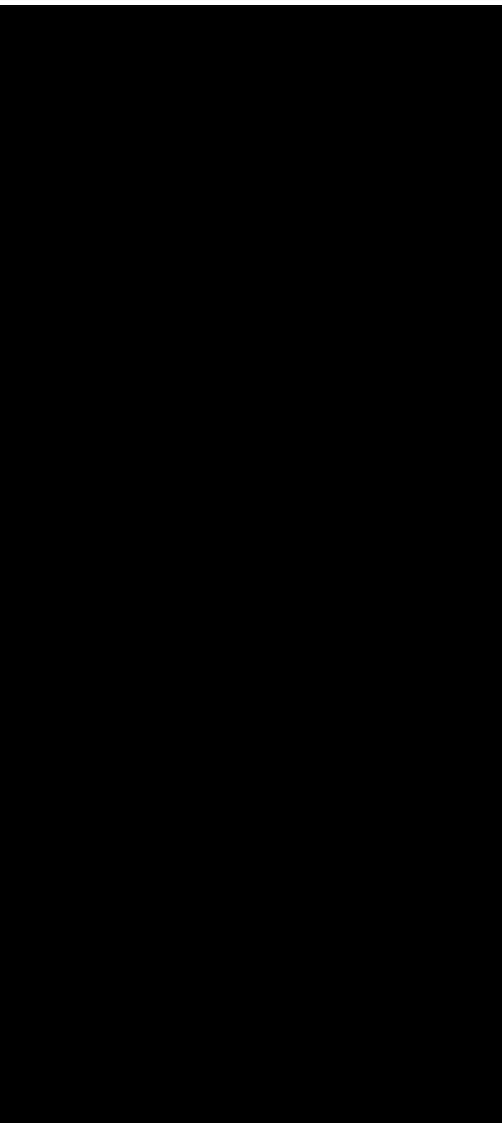
		2
		2
1		
2		5
		13
		13
1		2
2		2
3		2
4		2
5		2
6		22
7		23
8		23
		24
		24
1		24











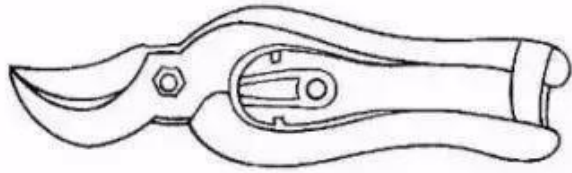








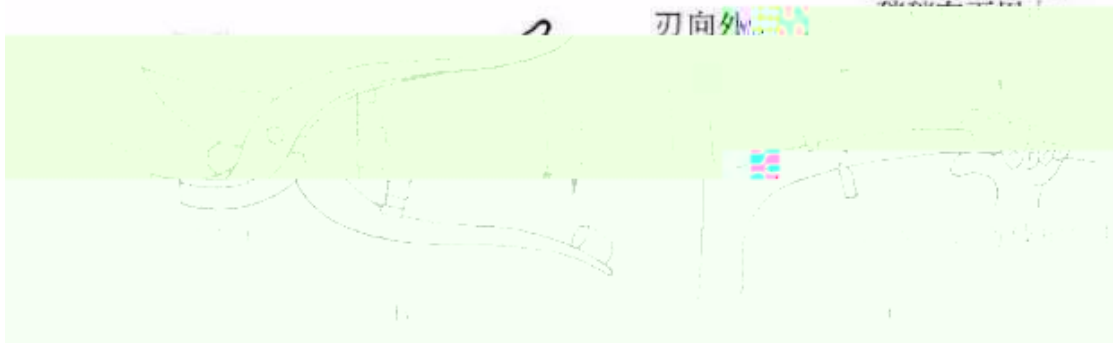


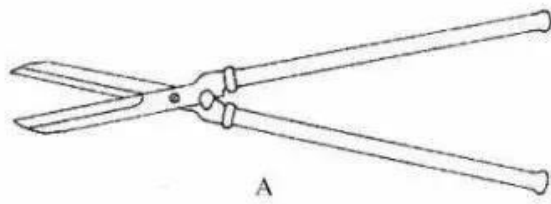


A

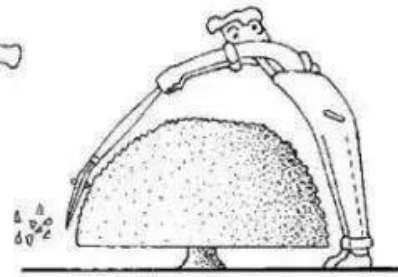
切入后，握枝手

刃向外

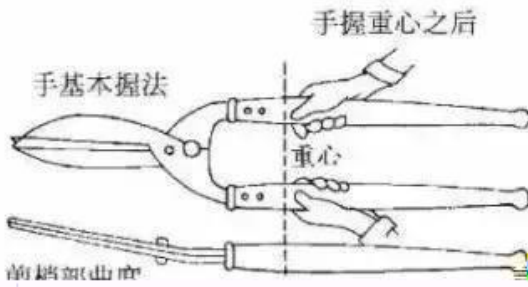




A



C



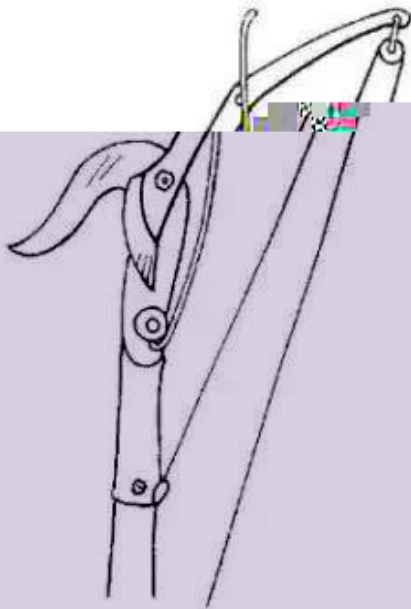
前柄前曲度

B

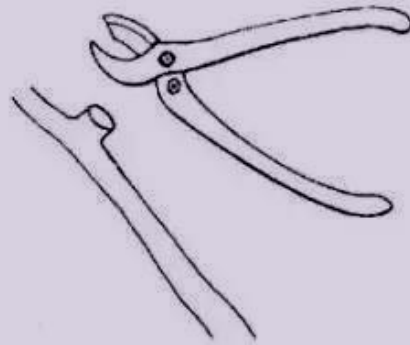
长刃剪的使用

长刃剪一般使用方法：(C) 可以修剪圆形球状不结实

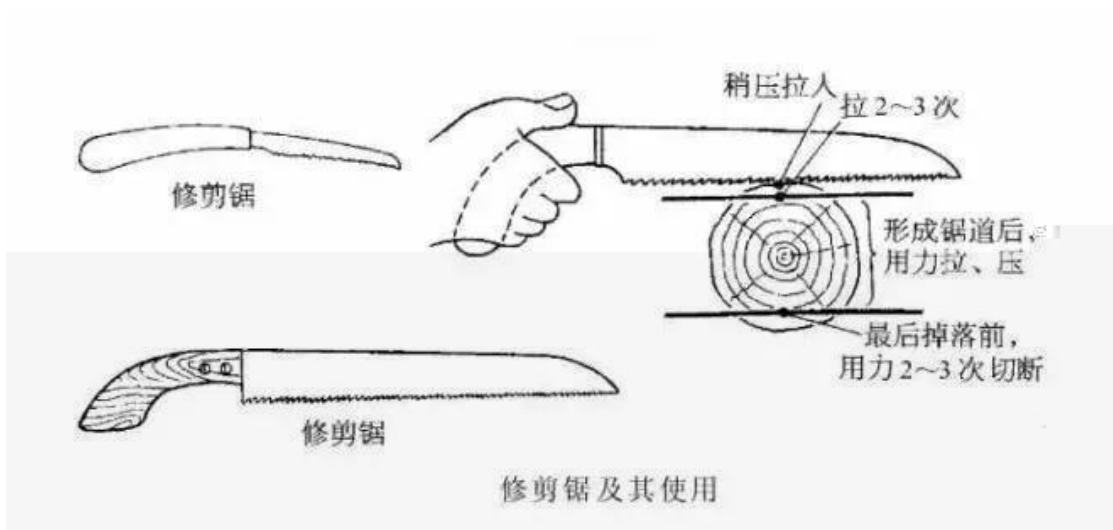
A

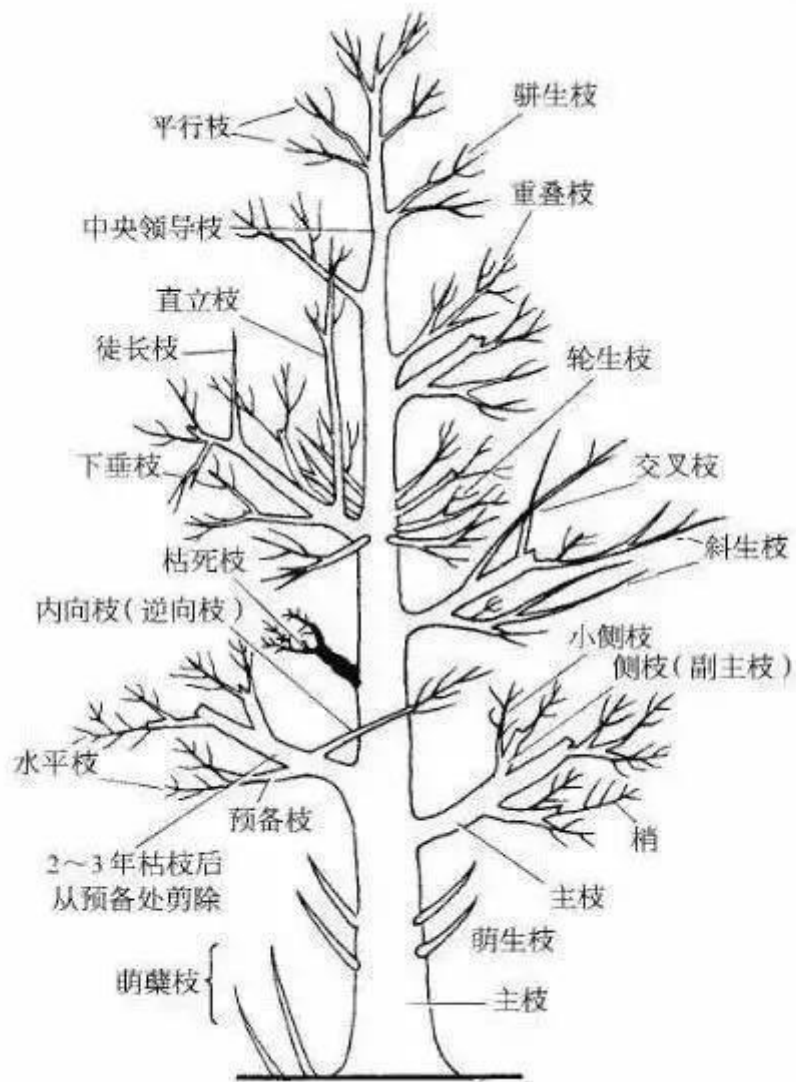


高枝剪

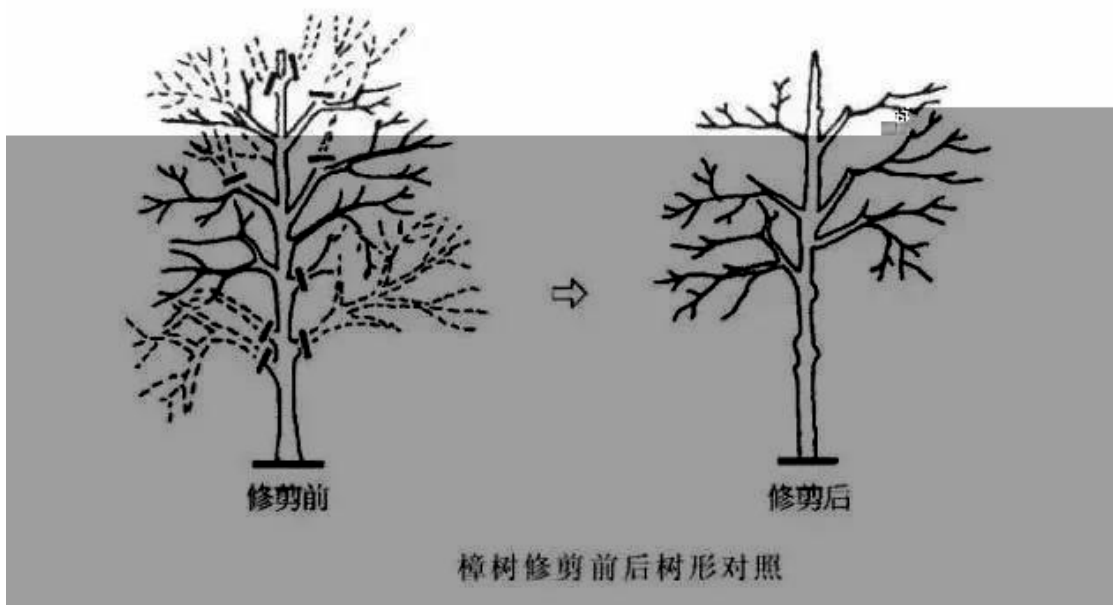


残枝剪

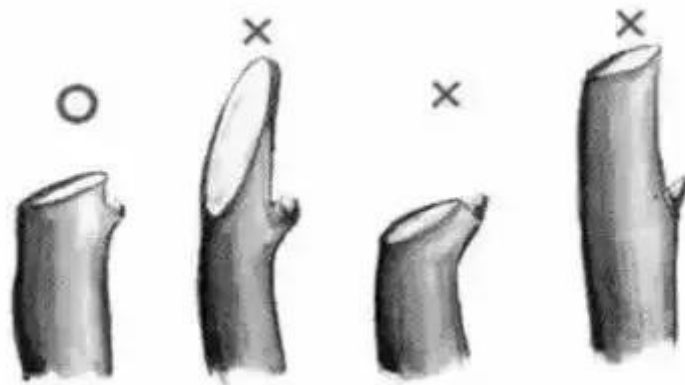


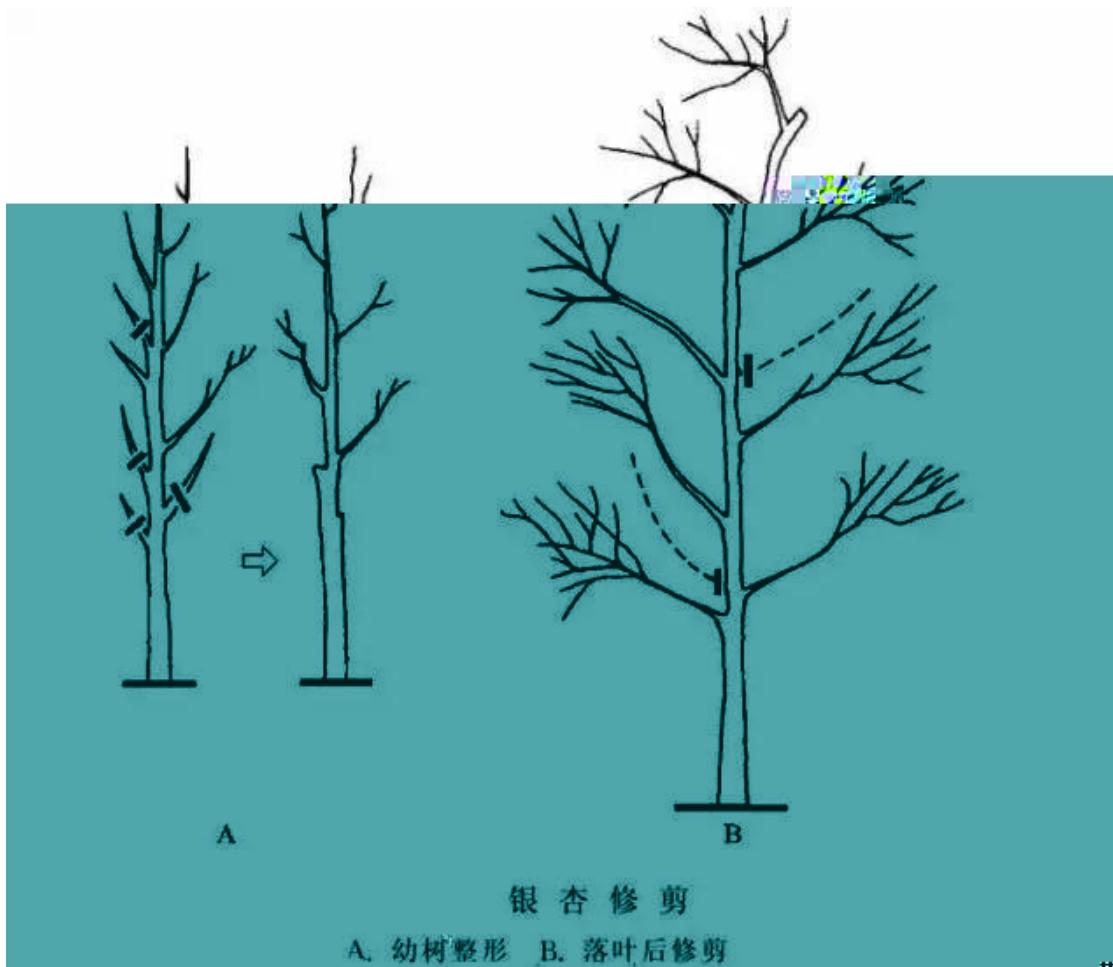


各种枝条姿态及相互关系示意



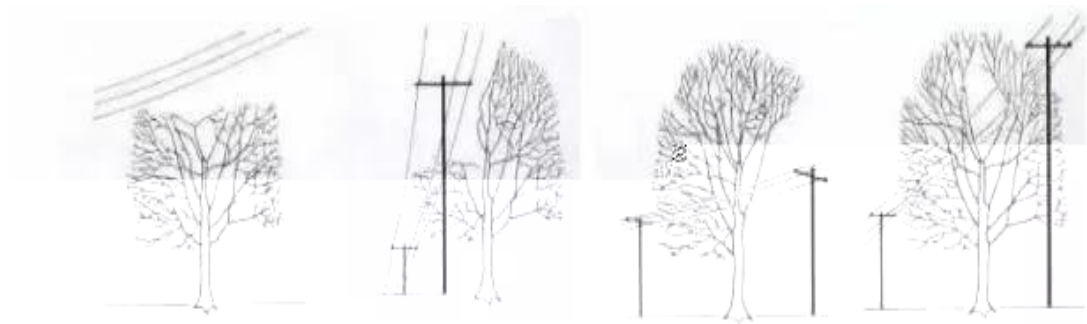
修剪时切口的正确与错误





银杏修剪

A. 幼树整形 B. 落叶后修剪



(I) 树冠上部修剪

(II) 树冠一侧修剪

(III) 树冠下侧方修剪

(IV) 树冠中间部分修剪

行道树修剪与上方线路的关系

